

# M5 Junction 10 Improvements Scheme

Active Travel Provision within the Scheme

TR010063 - APP 9.80

Rules 8 (k)

Planning Act 2008

Infrastructure Planning (Examination Procedure) Rules 2010

Volume 9

October 2024



Gloucestershire  
COUNTY COUNCIL

# Infrastructure Planning Planning Act 2008

## The Infrastructure Planning (Examination Procedure) Rules 2010

### M5 Junction 10 Improvements Scheme Development Consent Order 202[x]

---

#### Active Travel Provision within the Scheme

---

<b>Rule Number:</b>	Rule 8 (k)
<b>Planning Inspectorate Scheme Reference</b>	TR010063
<b>Application Document Reference</b>	TR010063/APP/9.80
<b>Author:</b>	M5 Junction 10 Improvements Scheme Project Team

<b>Version</b>	<b>Date</b>	<b>Status of Version</b>
Rev 0	October 2024	Deadline 5

# Contents

Chapter	Page
<b>1. Introduction</b>	<b>4</b>
<b>Figures</b>	
Active Travel Network Plan 1 - GCCM5J10-ATK-GEN-ZZ-SK-CH-000002	5
Surrounding Active Travel Network Plan 2 - GCCM5J10-ATK-GEN-ZZ-SK-CH-000003	6

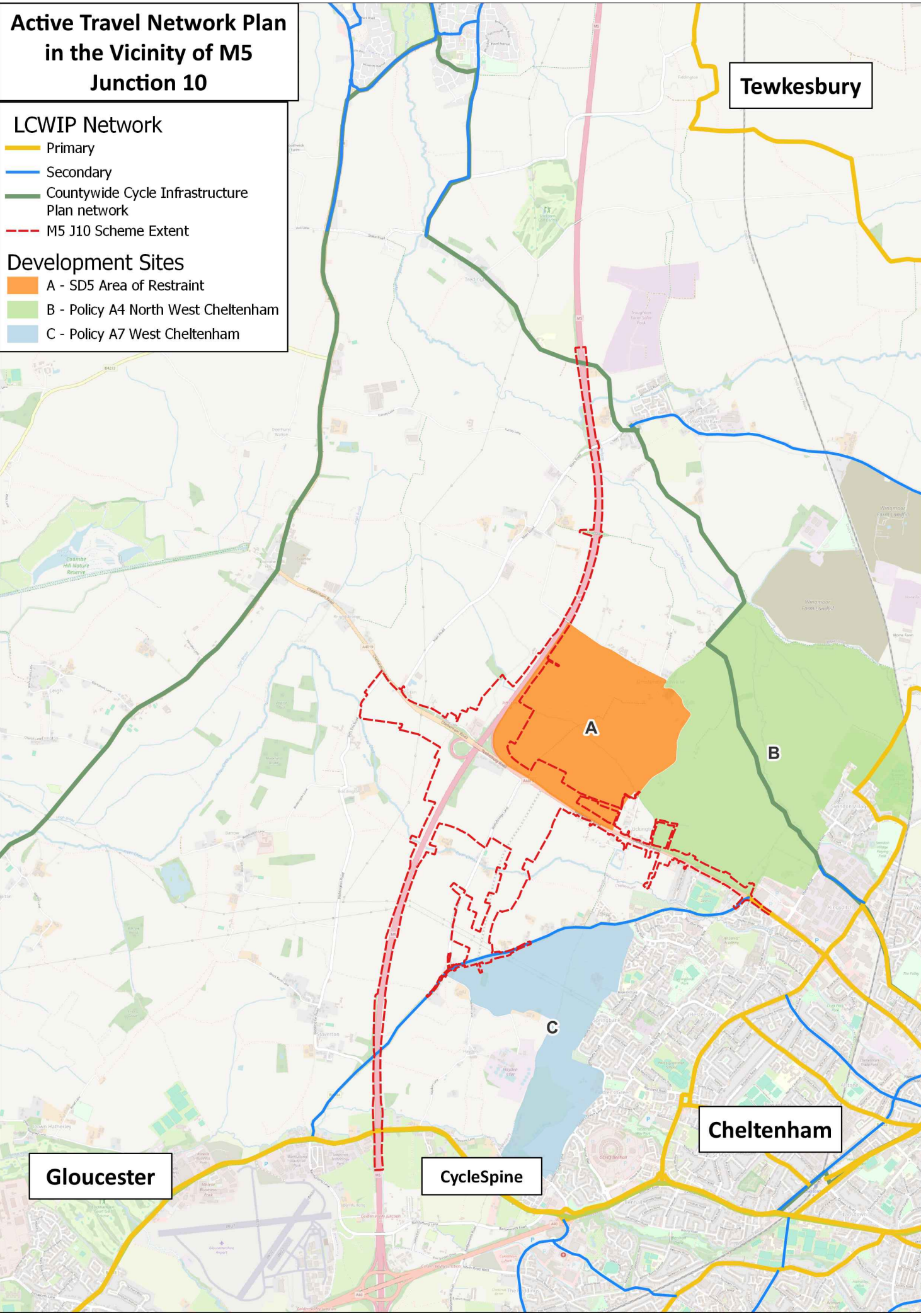
# 1. Introduction

- 1.1.1. We have produced two plans, developed through discussions with a representative from the Joint Councils. The intention, agreed with the Joint Councils, has been to help explain how the active travel provision within the scheme fits with the wider network of existing and planned routes identified in GCC policy. This demonstrates how the M5 Junction 10 Scheme contributes to a coherent network of routes and highlights where gaps remain in the wider network.
- 1.1.2. The first plan (GCCM5J10-ATK-GEN-ZZ-SK-CH-000002) shows the GCC active travel network (existing and aspirational routes) in the area between Cheltenham, Gloucester and Tewkesbury together with the following three development sites:
- *SD5 Area of Restraint*
  - *Policy A4 Morth West Cheltenham*
  - *Policy A7 West Cheltenham*
- 1.1.3. The second plan (GCCM5J10-ATK-GEN-ZZ-SK-CH-000003) shows the active travel facilities proposed as part of the M5 Junction 10 scheme and how they fit into the GCC active travel network in the vicinity of the scheme. This plan also includes brief explanations of factors affecting the choice of facilities and design standards/guidance referenced during the design process.

100  
Millimetres  
0 10  
DO NOT SCALE

**Active Travel Network Plan  
in the Vicinity of M5  
Junction 10**

- LCWIP Network**
- Primary
  - Secondary
  - Countywide Cycle Infrastructure Plan network
  - M5 J10 Scheme Extent
- Development Sites**
- A - SD5 Area of Restraint
  - B - Policy A4 North West Cheltenham
  - C - Policy A7 West Cheltenham



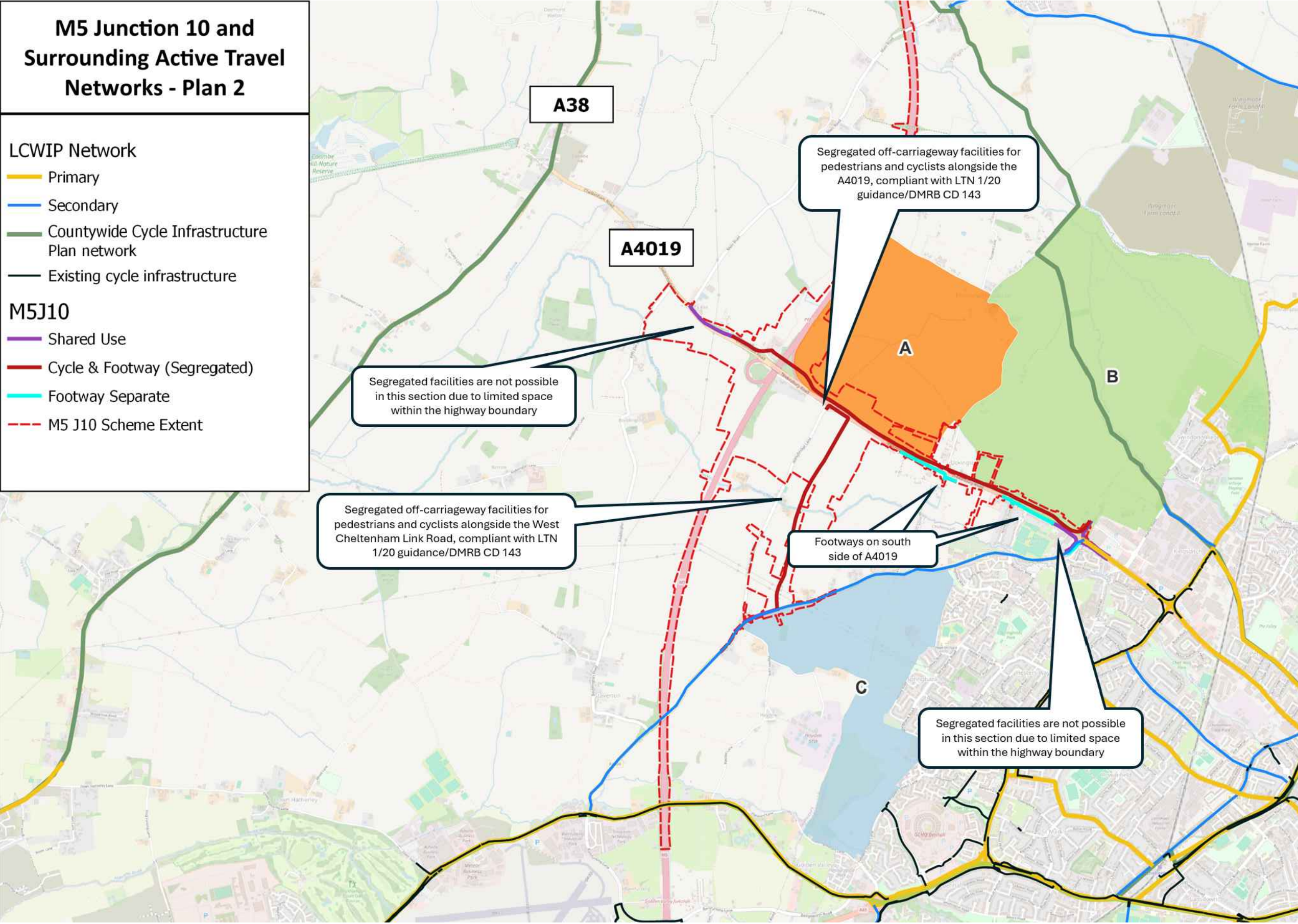
This map is based on Ordnance Survey material with the permission of Ordnance Survey on behalf of the Controller of His Majesty's Stationary Office. You are not permitted to copy, sub-license, distribute or sell any of this data to third parties in any form. © Crown Copyright and database rights 2024, Ordnance Survey AC0000850000.

Description							
Status	Revision	Drawn	Checked	Reviewed	Authorised	Issue Date	
Description							
Status	Revision	Drawn	Checked	Reviewed	Authorised	Issue Date	
Description							
Status	Revision	Drawn	Checked	Reviewed	Authorised	Issue Date	
Description							
Status	Revision	Drawn	Checked	Reviewed	Authorised	Issue Date	
Description							
Status	Revision	Drawn	Checked	Reviewed	Authorised	Issue Date	
Description							
Drawing Suitability							Status
WORK IN PROGRESS							S0
Project Title							
M5 Junction 10 Improvements Scheme							
Drawing Title							
ACTIVE TRAVEL NETWORK PLAN PLAN 1							
Drawing Number							
GCCM5J10		ATK		GEN		ZZ SK CH 00002	
Original Size: A3	Scale: NTS	Project Ref. No: 5228847	Sheet: 1 of 2	Rev: P01.1			

100  
Millimetres  
10  
0  
DO NOT SCALE

# M5 Junction 10 and Surrounding Active Travel Networks - Plan 2

- LCWIP Network**
- Primary
  - Secondary
  - Countywide Cycle Infrastructure Plan network
  - Existing cycle infrastructure
- M5J10**
- Shared Use
  - Cycle & Footway (Segregated)
  - Footway Separate
  - M5 J10 Scheme Extent



Segregated off-carriageway facilities for pedestrians and cyclists alongside the A4019, compliant with LTN 1/20 guidance/DMRB CD 143

Segregated facilities are not possible in this section due to limited space within the highway boundary

Segregated off-carriageway facilities for pedestrians and cyclists alongside the West Cheltenham Link Road, compliant with LTN 1/20 guidance/DMRB CD 143

Footways on south side of A4019

Segregated facilities are not possible in this section due to limited space within the highway boundary

Description							
Status	Revision	Drawn	Checked	Reviewed	Authorised	Issue Date	
Description							
Status	Revision	Drawn	Checked	Reviewed	Authorised	Issue Date	
Description							
Status	Revision	Drawn	Checked	Reviewed	Authorised	Issue Date	
Description							
Status	Revision	Drawn	Checked	Reviewed	Authorised	Issue Date	
Description							
Drawing Suitability							Status
WORK IN PROGRESS							S0
Project Title							
M5 Junction 10 Improvements Scheme							
Drawing Title							
SURROUNDING ACTIVE TRAVEL NETWORK PLAN PLAN 2							
Drawing Number							
GCCM5J10		ATK		GEN		ZZ SK CH 000003	
Original Size: A3	Scale: NTS	Project Ref. No: 5228847	Sheet: 2 of 2	Rev: P01.1			

This map is based on Ordnance Survey material with the permission of Ordnance Survey on behalf of the Controller of His Majesty's Stationary Office. You are not permitted to copy, sub-license, distribute or sell any of this data to third parties in any form. © Crown Copyright and database rights 2024, Ordnance Survey AC0000850000.

# AtkinsRéalis

5th Floor, Block 5  
Shire Hall  
Bearland  
Gloucester  
GL1 2TH

Tel: +44 (0) 8000 514 514